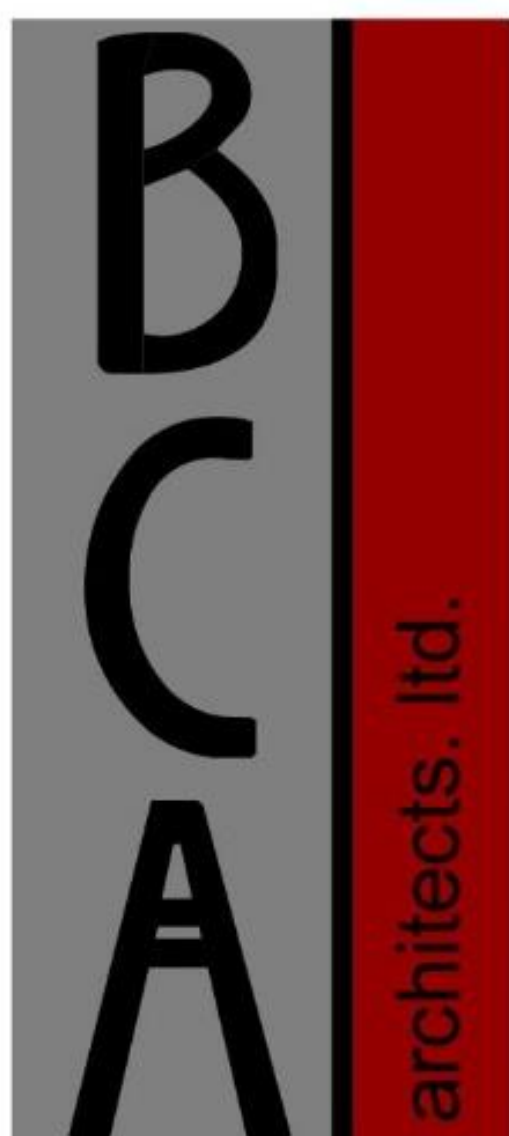




NORTHEAST ELEVATION



NORTH ELEVATION



bca-architects.com
 620 W. Lafayette Street
 Ottawa, Illinois 61350
 P| 815.434.0108

F/K/A:
 Basalay, Cary & Alstadt Architects, Ltd.
 © Copyright BCA Architects, Ltd. 2020

CITY OF PERU
 PUBLIC SAFETY COMPLEX
 MUNICIPAL POLICE HEADQUARTERS
 2650 NORTH PEORIA STREET
 PERU, ILLINOIS 61354

PRELIMINARY
 NOT FOR CONSTRUCTION
 MAY 11, 2020



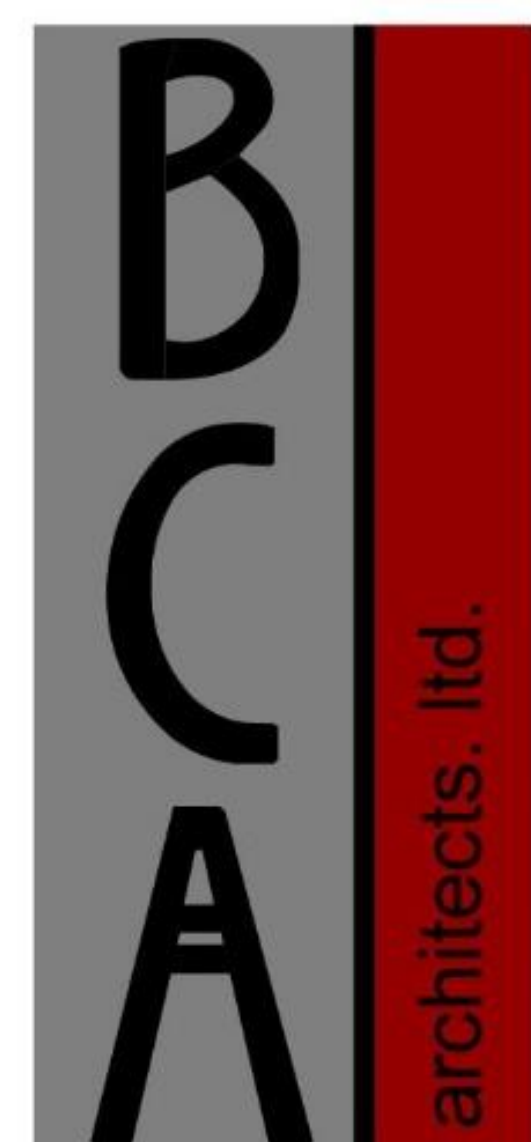
McCLAREN, WILSON & LAWRIE INC.



WEST ELEVATION



SOUTH ELEVATION



bca-architects.com
 620 W. Lafayette Street
 Ottawa, Illinois 61350
 P| 815.434.0108

F/K/A:
 Basalay, Cary & Alstadt Architects, Ltd.
 © Copyright BCA Architects, Ltd. 2020

CITY OF PERU
PUBLIC SAFETY COMPLEX
 MUNICIPAL POLICE HEADQUARTERS
 2650 NORTH PEORIA STREET
 PERU, ILLINOIS 61354

PRELIMINARY
 NOT FOR CONSTRUCTION
 MAY 11, 2020



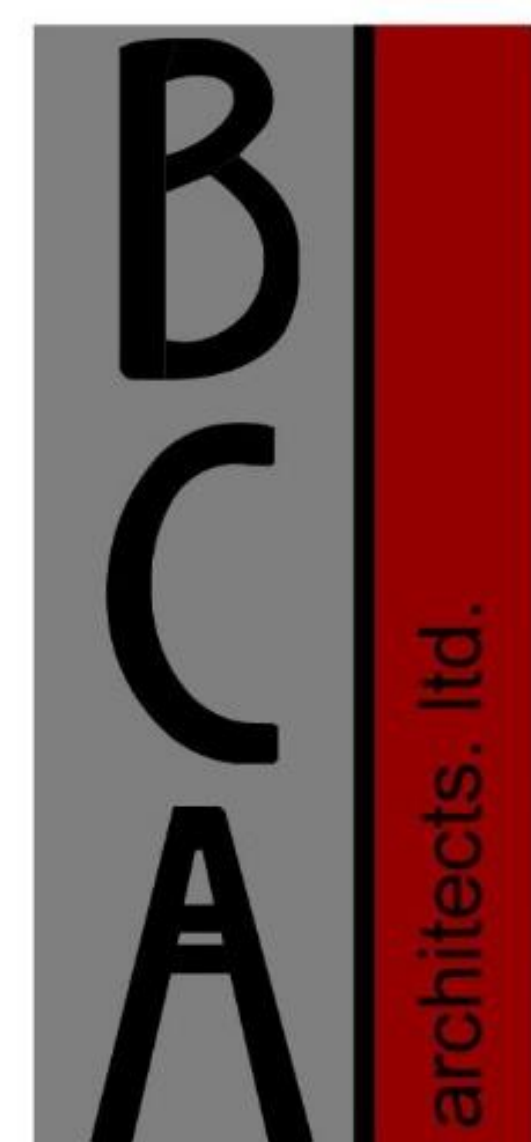
McCLAREN, WILSON & LAWRIE INC.



SOUTHEAST ELEVATION



EAST ELEVATION



bca-architects.com
 620 W. Lafayette Street
 Ottawa, Illinois 61350
 P| 815.434.0108

F/K/A:
 Basalay, Cary & Alstadt Architects, Ltd.
 © Copyright BCA Architects, Ltd. 2020

CITY OF PERU
PUBLIC SAFETY COMPLEX
 MUNICIPAL POLICE HEADQUARTERS
 2650 NORTH PEORIA STREET
 PERU, ILLINOIS 61354

PRELIMINARY
 NOT FOR CONSTRUCTION
 MAY 11, 2020



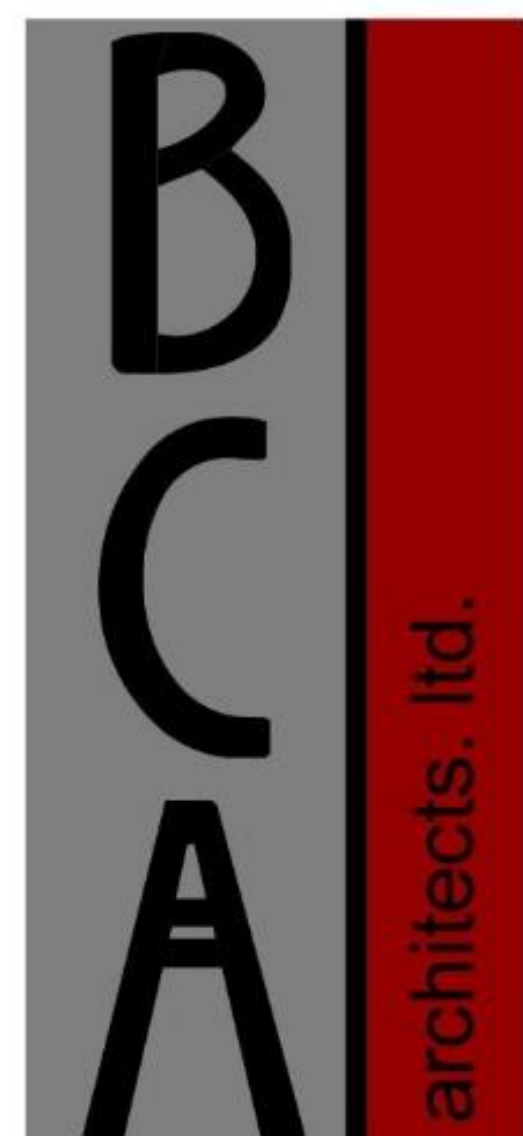
McCLAREN, WILSON & LAWRIE INC.



**NORTHEAST MAIN ENTRY
ELEVATION**



**SOUTHEAST MAIN ENTRY
ELEVATION**



bca-architects.com
620 W. Lafayette Street
Ottawa, Illinois 61350
P| 815.434.0108

F/K/A:
Basalay, Cary & Alstadt Architects, Ltd.

© Copyright BCA Architects, Ltd. 2020

CITY OF PERU
PUBLIC SAFETY COMPLEX
MUNICIPAL POLICE HEADQUARTERS
2650 NORTH PEORIA STREET
PERU, ILLINOIS 61354

PRELIMINARY
NOT FOR CONSTRUCTION
MAY 11, 2020



McCLAREN, WILSON & LAWRIE INC.